

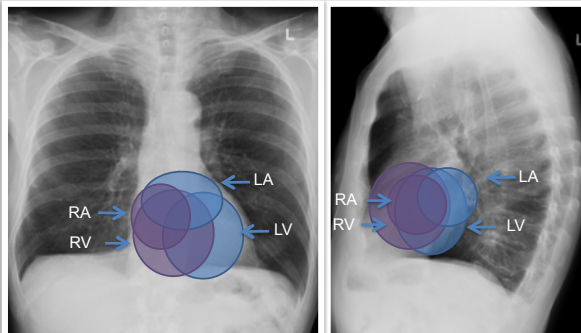


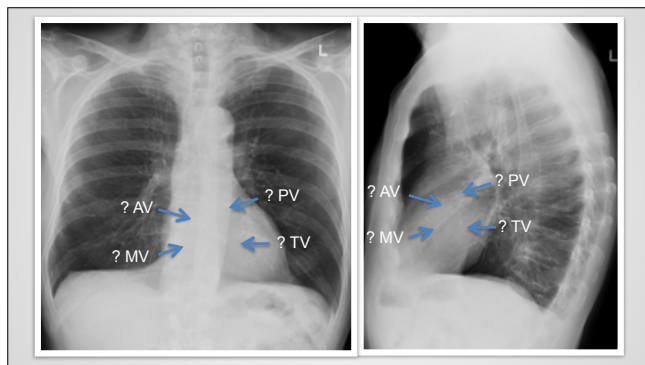
The heart and pericardium

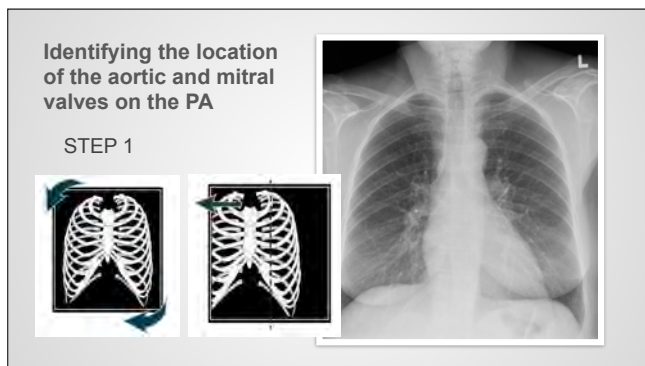
Location of the heart valves

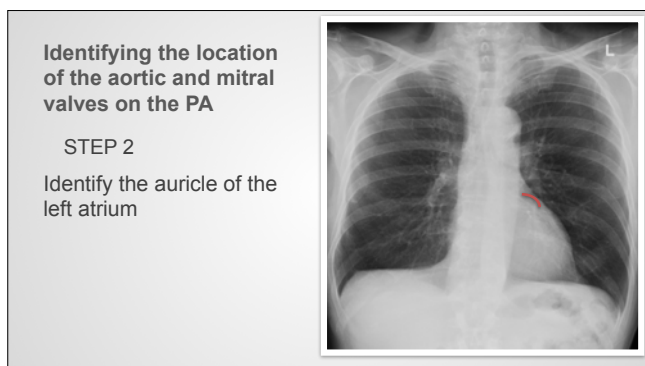
What will I gain from this video?

After watching this video, you will know how to localize the aortic and mitral valves on a chest X-ray.





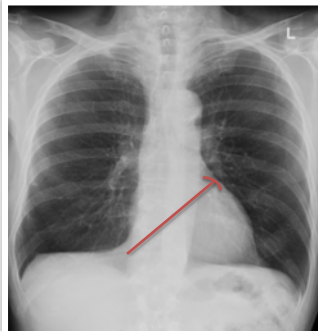




Identifying the location
of the aortic and mitral
valves on the PA

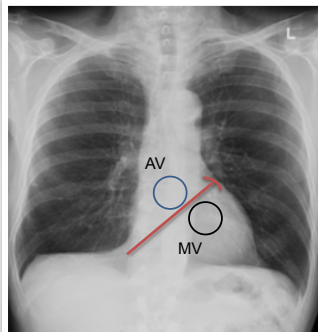
STEP 3

Line from auricle to right
diaphragm



Identifying the location
of the aortic and mitral
valves on the PA

STEP 4



Identifying the location
of the aortic and mitral
valves on the LAT

STEP 1

Identify the carina



Identifying the location
of the aortic and mitral
valves on the LAT

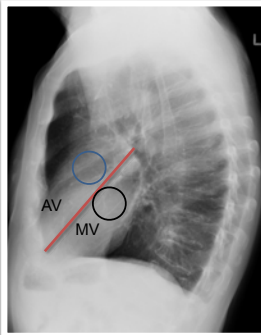
STEP 2

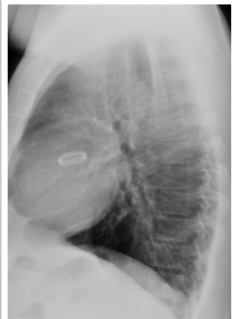
Line from carina to anterior
cardiophrenic angle



Identifying the location
of the aortic and mitral
valves on the LAT

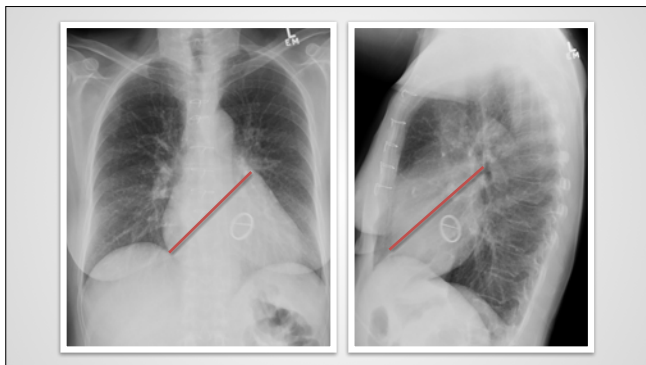
STEP 3

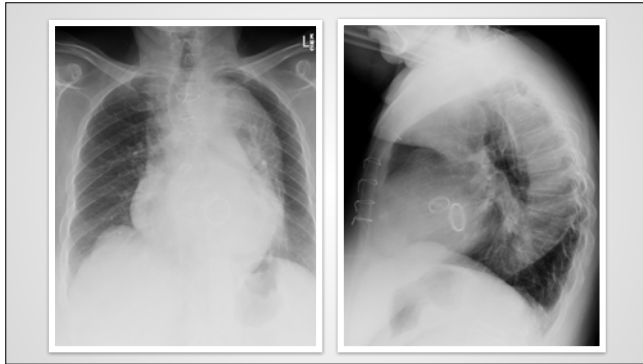


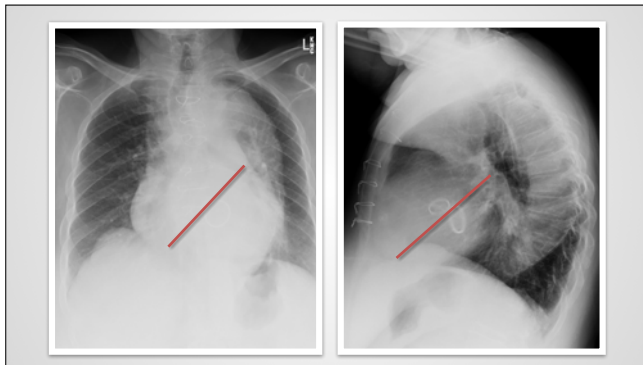












On the PA the aortic valve lies above and the mitral valve below a line that extends from the auricle of the left atrium to the point where the right atrium intersects with the diaphragm.

On the LATERAL the aortic valve lies above and the mitral valve below a line that extends from the carina to the anterior costophrenic angle.
